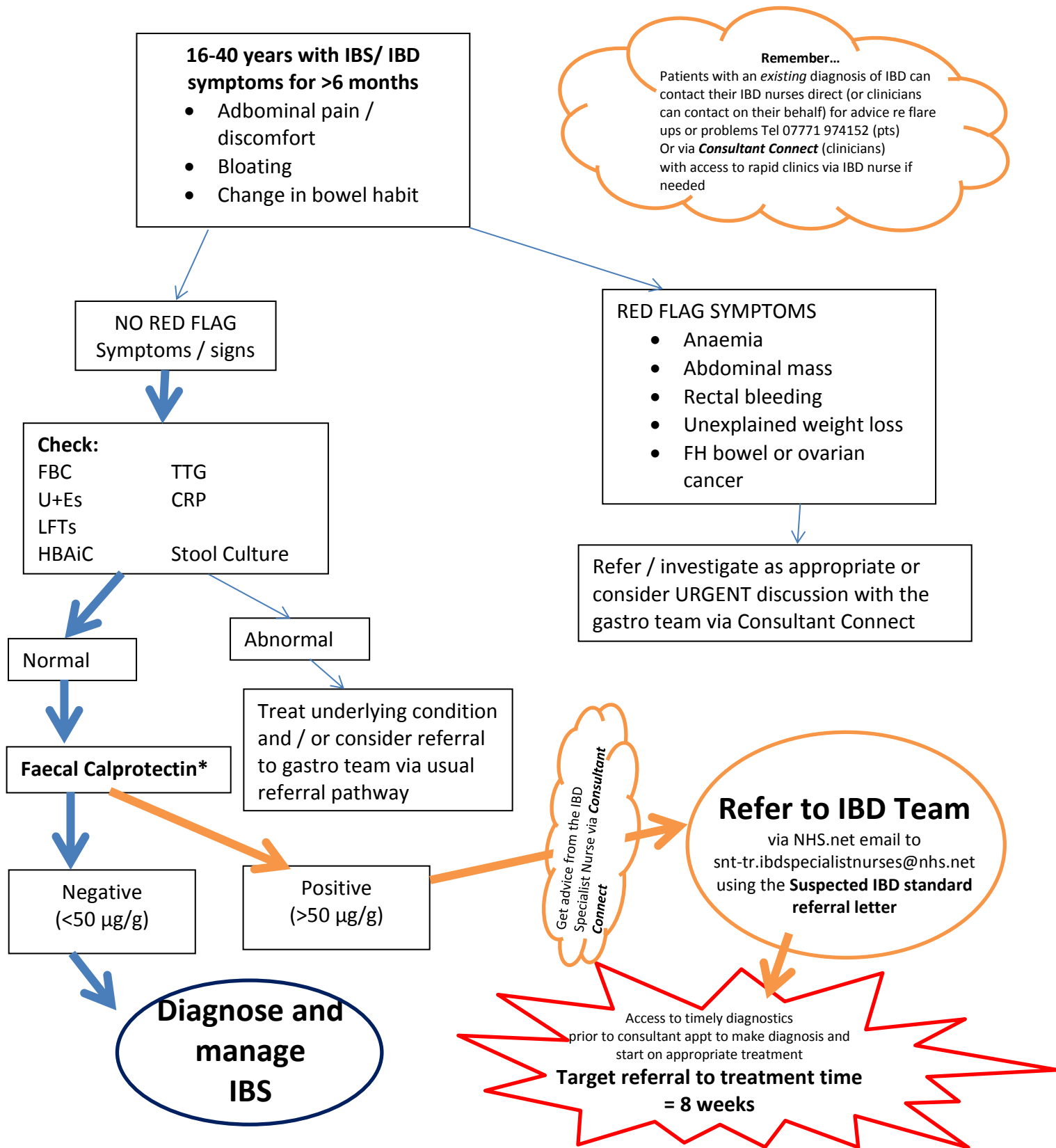


Diagnosing IBS and referral of Suspected IBD in Adults: the Stockport Pathway



***Note:** Consider alternative causes of raised calprotectin, such as gastrointestinal infection (shigella, salmonella and C. diff infections) colorectal neoplasia, gastrointestinal bleeding, non-steroidal anti-inflammatory treatment (excluding low dose aspirin) and cirrhosis of liver.