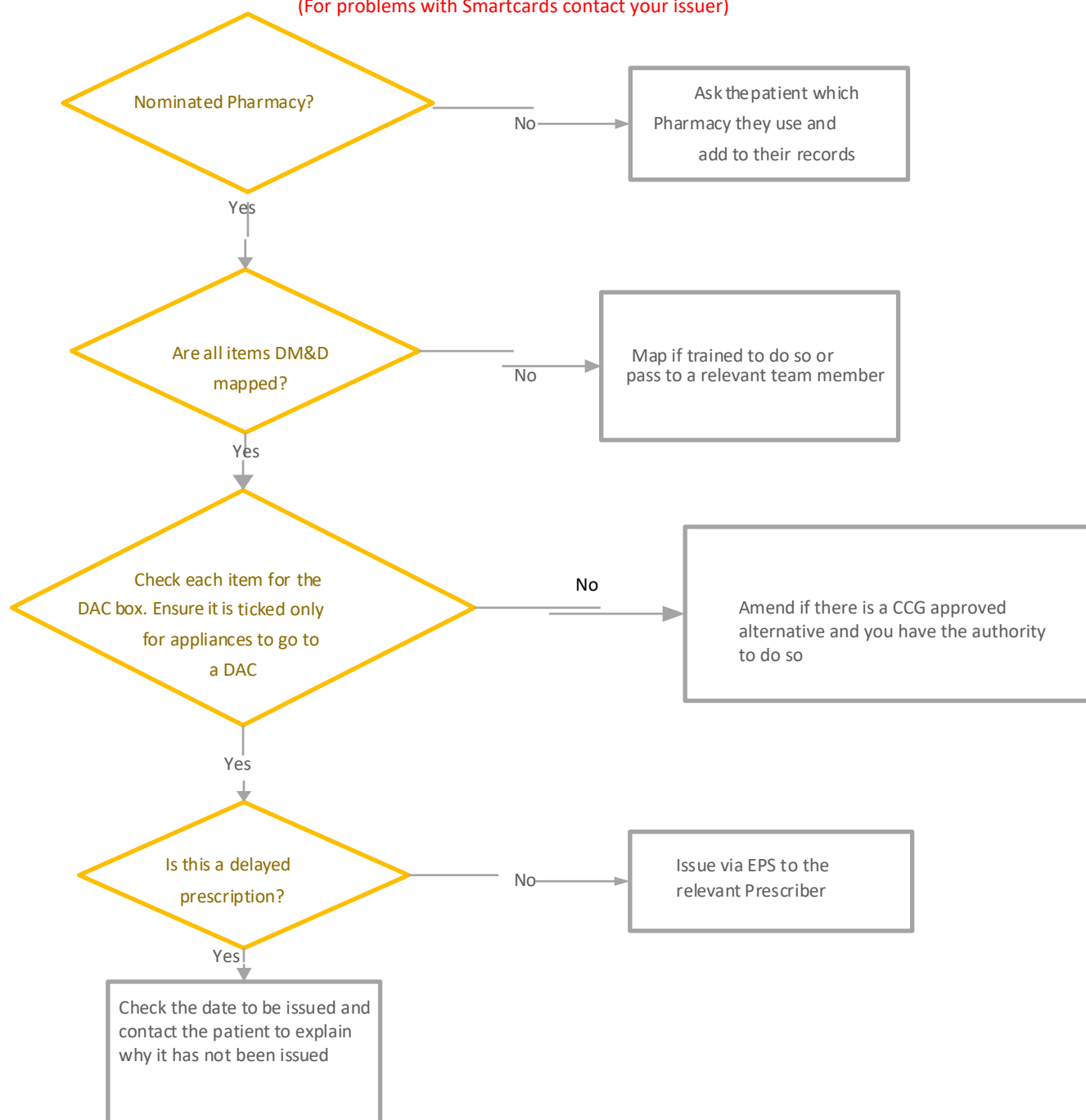


How to issue prescriptions via EPS		
Reference	How To Guide 9	
Version	1.2	
Approval date	01.02.2019	Approved by
Review date	01.02.2020	

Please note that if the user is not logged into EMIS web via their Smartcard then prescriptions cannot be issued via EPS
(For problems with Smartcards contact your issuer)



This document is part of a suite of documents produced for the sole purpose of NHS Stockport GP practices in managing the prescription process. The CCG accept no responsibility or liability for any use of the information the documents contain outside of NHS Stockport GP practices or for adoption by other organisations providing health or care service