



**GREATER  
MANCHESTER  
TRAINING HUB**

# GMTH Connect

**Issue 1: August 2023**

Welcome to the first edition of the Greater Manchester Training Hub newsletter. It's our opportunity to connect with you the information we think you'll like.

For our first edition, we're treating you to an overview of our programmes and placements, feedback from our learners and all the great stuff we've been doing to support primary and social care.

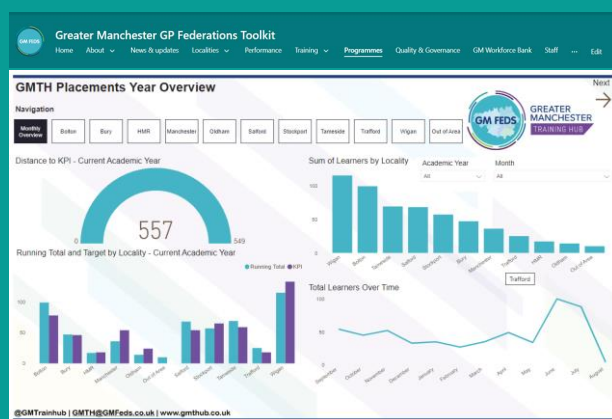
**STOP PRESS:** See our 2022/23 Annual Report. [Click here](#)

## Toolkit

We've developed an innovative online toolkit – the first of its kind in the country. The Greater Manchester Training Hub Toolkit acts as a digital doorway to automated live information to support learners and staff, which is always up to date with the documents and resources they need.

The toolkit is now a one-stop place for all the programme events and documents, which automatically update in real-time.

Additionally, accessing this information at the touch of a button means we don't have to clog people's inbox.



Our digital toolkit also allow us to record, monitor and report on all the work we are doing – making us a truly transparent and accessible team.



## ILM Accreditation

**What this means?** We have met the global quality benchmark 'ILM Assured' requirements and confirm that we have world-class systems and processes in place to design, deliver and maintain leadership and management programmes.

Scan the QR code or [Click Here](#).





## Programmes

We will put a spotlight on three programmes in the upcoming editions of our newsletter.

For this month, as it's our first, we've provided you with an overview of all our programmes in the wheel below. More information can be accessed via [gmth.co.uk](http://gmth.co.uk) or by contacting the programme lead (see back page.)



In the next edition, we'll share information on...GP Fellowship, Advanced Clinical Practice and Wider Workforce Lead



GREATER  
MANCHESTER  
TRAINING HUB

# GMTH Connect

Issue 1: August 2023

## Placements

We oversee placements for a range of student types in primary and social care. GMTH is committed to growing the workforce and exposing learners to frontline experience. For information on the current placements available contact [GMTH@GMFeds.co.uk](mailto:GMTH@GMFeds.co.uk)

### Placements available to learners

- Physician Associates
- Pharmacists
- Nurses
- Paramedics
- AHPs (Allied Health Professionals)

### Placements looking for hosts

- Primary Care
- Social Care

## Feedback

We spoke to Bev about her experience on the Mentorship programme. Scan the QR code or [click here](#).



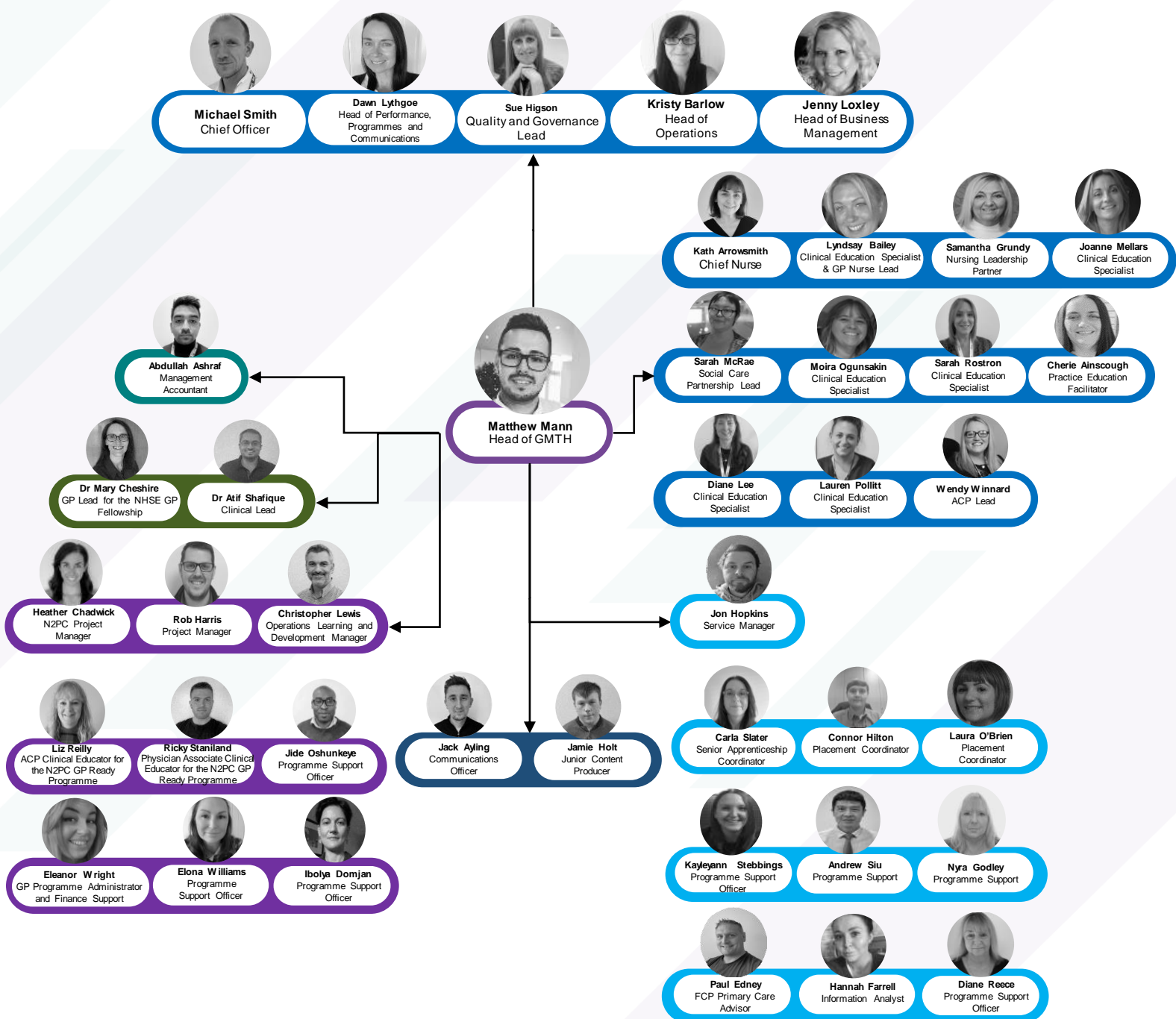
Hear from Jon about his recent placement experience. Scan the QR code or [click here](#).





## Meet the team

Over the last twelve months, the team has grown dramatically and will continue to grow. We'd really like you to get to know us more, so keep an eye out for future newsletters where we will introduce you to them in more detail as we put them in the spotlight





**GREATER  
MANCHESTER  
TRAINING HUB**

# GMTH Connect

Issue 1: August 2023

## Are you...

A **GP** Looking for **extra shifts**?

A **practice** in need of **GPs**?



**GM Workforce Bank** is quick and easy to sign up to.

**Benefits to practices include –**

- Free to use.
- All relevant GP documentation collated and held on the GM passport.
- Dedicated support, responding within 24 working hours.

**Benefits for GPs –**

- Pick the shifts and locations that fit around you.
- Free and easy to register.

Register now at [gmworkforcebank.co.uk](http://gmworkforcebank.co.uk)



Hear more about GM Workforce Bank [here](#) or via the QR code.



**GREATER  
MANCHESTER  
TRAINING HUB**

# GMTH Connect

Issue 1: August 2023

## Where we've been...



### Primary Care Training Hub Conference - May

In May, we collaborated with our fellow Northwest training hubs to promote our programmes and share each other's successes.

### Brathay Development Programme - June

In June, our team participated in a two-day development programme at Brathay House in Ambleside.



*"We not only grew closer as a team but started to understand one another, our personalities, how we work and from that, how we can all best work together."*

We developed our communication and team-building skills in activities away from the office.

This included white water rafting, hiking and a mohawk walk.



### All Practice Citywide meeting- July

In July, we heard from some excellent speakers at the Manchester All Practice Citywide Meeting. Plus, we had a stall that created plenty of interest. It was great to see so many people wanting to be a part of developing their new and existing workforce.





**GREATER  
MANCHESTER  
TRAINING HUB**

# GMTH Connect

Issue 1: August 2023

## Dates for your diary

|           | Mon  | Tue   | Wed | Thu   | Fri   | Sat | Sun |
|-----------|--|---|-----|---|---|-----|-----|
| Sept 2023 |  |   |     |   | 1   | 2   | 3   |
|           | 4  | 5   | 6   | 7   | 8 We're attending 'Practice Learning Symposium 2023-'To Boldly Go: The Future of Practice Learning' at Chester University | 9   | 10  |
|           | 11   | 12  | 13  | 14 <a href="#">Heart of Matter GM Movement for CVD Health &amp; Wellbeing</a>       | 15  | 16  | 17  |
|           | 18 <a href="#">Trainee Nursing Associates programme for next intake starts</a> | 19  | 20  | 21 We are attending St. Patrick's RC High School Annual Careers Information Evening | 22  | 23  | 24  |
|           | 25   | 26 <a href="#">GPN Foundation Start date September 2023</a> | 27  | 28  | 29 We're attending MMU's First multi-professional AHP Careers Fair  | 30  |     |
| Oct 2023  |  |   |     |   |   |     | 1   |
|           | 2  | 3   | 4   | 5   | 6 We're attending Post 16 Careers Fair at Levenshulme High  | 7   | 8   |
|           | 9  | 10  | 11  | 12  | 13 We're attending Careers Insight Day for the MU Foundation  | 14  | 15  |
|           | 16 We're attending Annual Careers Convention at St James High School           | 17  | 18  | 19  | 20  | 21  | 22  |
|           | 23   | 24  | 25  | 26  | 27  | 28  | 29  |
|           | 30   | 31  |     |   |   |     |     |

Thank you for taking the time to read our first edition of GMTH Connect. We hope you found it interesting, and we would really love to hear what you think and if you have any suggestions.

Please click here to fill out a short survey about or scan the QR code below.





**GREATER  
MANCHESTER**  
TRAINING HUB

# GMTH Connect

Issue 1: August 2023

| Our Programme                       | Contact  |
|-------------------------------------|--|
| Advanced Clinical Practice          | Wendy Winnard: <a href="mailto:w.winnard@nhs.net">w.winnard@nhs.net</a><br>Carla Slater: <a href="mailto:Carla.slater1@nhs.net">Carla.slater1@nhs.net</a>  |
| Apprenticeships                     | Carla Slater: <a href="mailto:Carla.slater1@nhs.net">Carla.slater1@nhs.net</a>   |
| Continuing Professional Development | GM Locality Lead or Jon Hopkins: <a href="mailto:Jon.Hopkins2@nhs.net">Jon.Hopkins2@nhs.net</a>  |
| Health Professional in Social Care  | Sarah McRae: <a href="mailto:Sarah.mcrae@nhs.net">Sarah.mcrae@nhs.net</a>  |
| New to Primary Care                 | Heather Chadwick: <a href="mailto:heather.chadwick@nhs.net">heather.chadwick@nhs.net</a>   |
| Non-Medical Prescribing             | Lyndsay Bailey: <a href="mailto:Lyndsay.Bailey@nhs.net">Lyndsay.Bailey@nhs.net</a><br>Jon Hopkins: <a href="mailto:Jon.hopkins2@nhs.net">Jon.hopkins2@nhs.net</a>  |
| Student Placements                  | Jon Hopkins: <a href="mailto:Jon.hopkins2@nhs.net">Jon.hopkins2@nhs.net</a>  |
| Wider Workforce Lead                | Connor Hilton: <a href="mailto:Connor.hilton@nhs.net">Connor.hilton@nhs.net</a><br>Atif Shafique: <a href="mailto:a.shafique@nhs.net">a.shafique@nhs.net</a>   |
| GPN Foundation                      | Kathryn Arrowsmith: <a href="mailto:Kath.Arrowsmith@boltongpfed.co.uk">Kath.Arrowsmith@boltongpfed.co.uk</a><br>Elona Williams: <a href="mailto:elona.williams@boltongpfed.co.uk">elona.williams@boltongpfed.co.uk</a><br>Samantha Grundy: <a href="mailto:samantha.grundy@boltongpfed.co.uk">samantha.grundy@boltongpfed.co.uk</a><br>Moira Ogunsakin: <a href="mailto:mogunsakin@nhs.net">mogunsakin@nhs.net</a> |
| GPN Fellowship                      | Rob Harris: <a href="mailto:Rob.harris4@nhs.net">Rob.harris4@nhs.net</a><br>Elona Williams: <a href="mailto:elona.williams@boltongpfed.co.uk">elona.williams@boltongpfed.co.uk</a>   |
| Trainee Nursing Associate           | Cherie Ainscough: <a href="mailto:Cherie.ainscough@nhs.net">Cherie.ainscough@nhs.net</a><br>Laura O'Brien: <a href="mailto:Laura.obrien@nhs.net">Laura.obrien@nhs.net</a>  |
| GP Fellowship                       | Rob Harris: <a href="mailto:Rob.harris4@nhs.net">Rob.harris4@nhs.net</a>   |
| GP Mentor Scheme                    | Rob Harris: <a href="mailto:Rob.harris4@nhs.net">Rob.harris4@nhs.net</a><br>Ibolya Domjan: <a href="mailto:ibolya.domjan@nhs.net">ibolya.domjan@nhs.net</a>  |
| GP Phoenix                          | Jon Hopkins: <a href="mailto:Jon.hopkins2@nhs.net">Jon.hopkins2@nhs.net</a>  |
| Unified Learning Environments       | <a href="mailto:gmth@gmfeds.co.uk">gmth@gmfeds.co.uk</a>   |

For more information on our programmes visit [GMTHub.co.uk](http://GMTHub.co.uk)